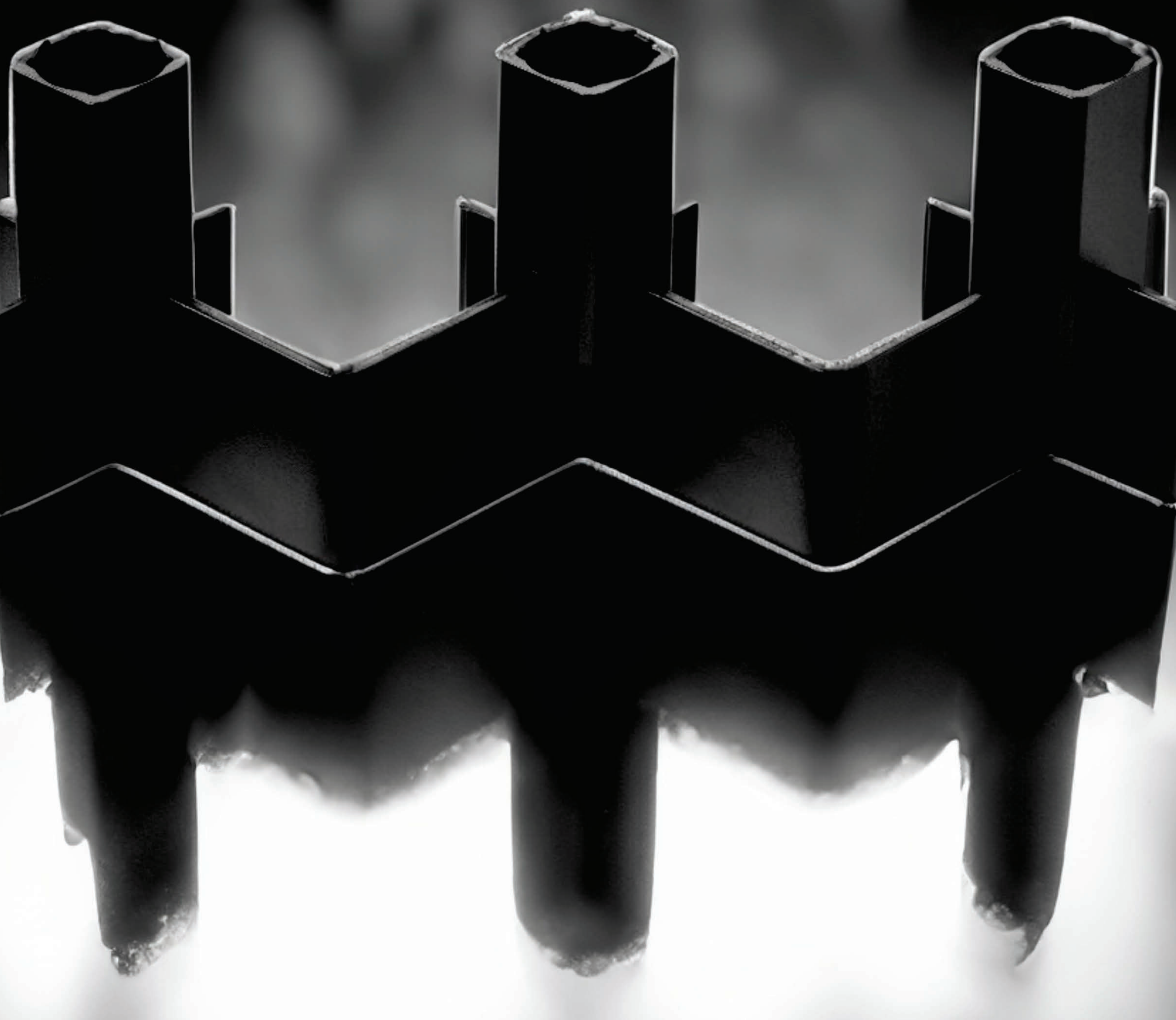


III.AURORA CASSÈ



BY **LEGARTH**

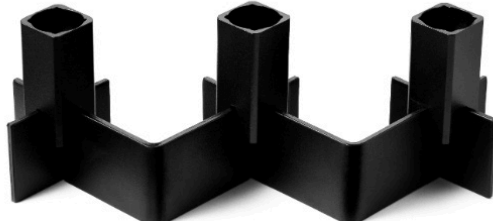
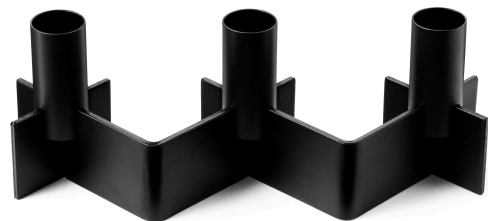
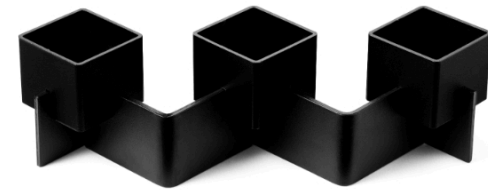


II.AURORA CASSÈ Designet by *Jimmy Wollenberg*

Product sheet

With **III.AURORA CASSÈ**, you have all the possibilities in the world. You can rearrange the holder to fit right where you want it, whether along your dining table or on your windowsill. You also have the option to remove a section of the holder and save it for when you need a longer display. The choice is yours!

You receive a total of 2 snapped slots of 200 mm. and 2 end pieces of 60 mm. This means you can create our **II.AURORA CASSÈ** and **I.AURORA** or assemble them in an M or W shape.



TECHNICAL SPECIFICATIONS

PRODUCT TYPE

Candle holder **III.AURORA CASSÈ**

COLLI

Colours black, white, olive: 3 pcs.
Colours nickel-plated, burnished copper: 2 pcs.

ENVIRONMENT

Indoor

DIMENSIONS

H: 8 cm / 3,15"
W: 10 cm / 3,39"
D: 15-17 cm / 5,90 to 6,70"

PRODUCTION PROCESS

The candleholder is casted with zinc and afterwards shot blasted before the candleholder is powder coated.

COLOURS

Black (RAL 9005)
White (RAL 9010)
Olive (RAL 7008)
Nickel-Plated
Burnished Copper

MATERIALS

Powder coated iron.

WEIGHT

Nickel-Plated: 0,324 up to 0,344 kg / 0,71 up to 0,76 lb

PACKAGING TYPE

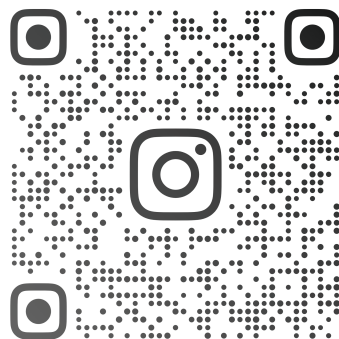
Gift box

PACKAGING MEASUREMENTS (H x W x D)

19,5 cm x 11,5 cm x 6,4 cm / 7,68" x 4,53" x 2,52"

MATERIALS & MAINTENANCE

Please visit [bylegarth](http://bylegarth.com) for materials, care and maintenance instructions.



BYLEGARTH



BY LEGARTH

II.AURORA CASSÈ